

**REIST**  
INDUSTRIES Inc.

*Aera Seeder*

**OPERATOR & PARTS MANUAL**  
**24 SP Self-Propelled**



# **TABLE OF CONTENTS**



ITEM	PAGE
INTRODUCTION	2
SAFETY	3
STORAGE	3
CONTROLS	4
OPERATION	5
ADJUSTMENTS	6
CALIBRATION	7
CALIBRATION CHART	8
PARTS	9-13
WARRANTY	14

# INTRODUCTION



## CONGRATULATIONS!!

Thank you for choosing the **Reist Self Propelled Area Seeder**. We feel confident that this equipment will meet your expectations in workmanship, reliability and performance.

This manual is to assist you with the safe operation of the Area Seeder.

### The **Reist Area Seeder**

Is a versatile piece of equipment to assist you in various primary and over seeding needs.

MODEL NO. \_\_\_\_\_ SERIAL NO. \_\_\_\_\_.

## **SAFETY**



## **CAUTION !**

1. Do not operate engine in a confined or non-ventilated area.
2. Do not perform any adjustments or repairs with engine running.
3. Do not operate on excessive inclines.
4. ever let a child operate machinery.
5. It is the owner's responsibility to make sure that all operators read this manual before operating the equipment.
6. Always keep shields in place when operating.

## **Storage**

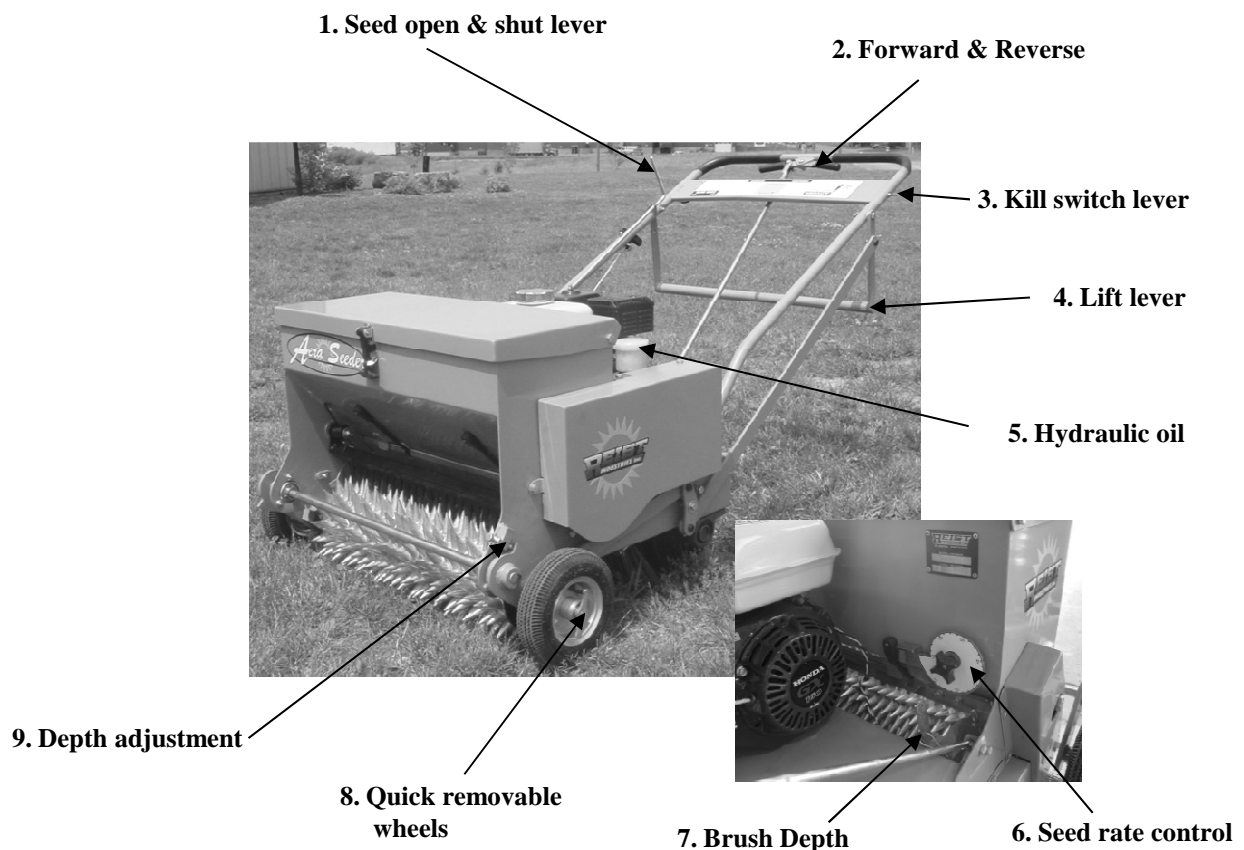


1. Clean out seed bin.
2. Store in dry ventilated area
3. Clean before putting into storage. May be washed with pressure washer.
4. Touch-up paint as needed.
5. Oil seeder chains.

# Controls



1. Opens and closes grass seed flow
2. Starts, stops, and reverses Aera Seeder. This is variable speed which means the more the lever gets squeezed the faster the Aera Seeder moves.
3. Kill switch level must be held to start engine.
4. Lift Lever raises and lowers the Aera Seeder.
5. Hydraulic oil for Transmission. Check oil level daily.
6. Turn cam to adjust amount of seed required. Higher the number the more seed is applied.
7. Controls depth of brush. As bristles wear hairpin is moved to a higher hole.
8. Wheels can easily be removed when it is necessary to get closer to fence or objects. 4" wide wheels are also available which are optional.
9. Depth adjustment is required when turf is soft and depth needs to be controlled such as golf greens.



# Operation



1. Before starting check oil in transmission and engine.
2. Check gas
3. Close seed flow lever.
4. Pour grass seed into bin. Make sure it is clean seed with no dirt lumps or foreign objects.
5. To start engine, switch on engine must be in ON position.
6. Kill switch lever needs to be held to start engine.
7. When starting cold engine, put on choke and pull cord until engine fires.
8. Turn off choke.
9. When engine is warm choke is normally not necessary.
10. To move, squeeze Forward and Reverse lever. The more its squeezed the fast the Aera Seeder will travel.
11. When not seeding have the wheels in the down position. This is done by pulling back on the Lift Level below the handle bar.
12. To start seeding lift the wheels, squeeze the Forward lever, and open the seed flow lever.
13. Turning a sharp corner can be done by either lifting or pushing down on the handle.
14. If seeding soft turf or depth needs to be controlled see page "Adjustments".

# Adjustments



## Tightening Drive Chains

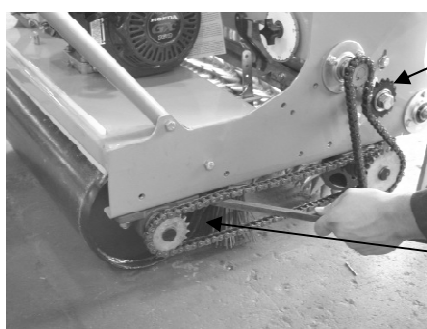
There are three drive chains on the 24 SP that need to be checked periodically. Two are tightened with idle sprockets **fig. 1 & 2**. The chain that drives the rear roller is tightened by loosening the roller bearing. Then with a pry bar as seen in **fig. 1** pry the bearing back until there is no slack in chain.

## Speed Adjustment

The forward and reverse speed is adjusted by two bolts. The front bolt **fig.2** adjusts the reverse speed and the rear bolt towards the handle adjusts the forward speed. Turning clockwise increases speed and counter clockwise decreases speed.

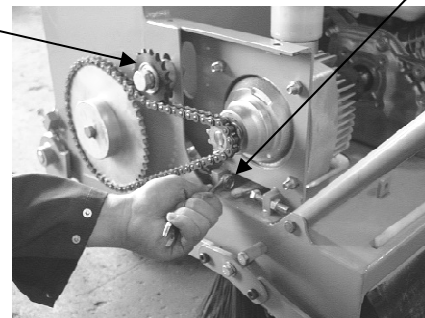
## Neutral Adjustment

If in case the Aera Seeder creeps when forward & reverse lever is released, adjustment needs to be made. The nuts compressing the springs in **fig.3** need to be tightened or loosened. However much one nut is tightened the other nut should be loosened.



Chain Tighteners

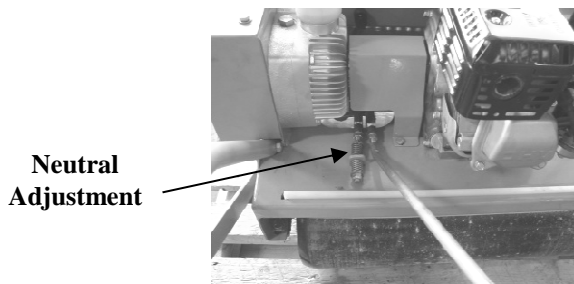
Move roll to tighten bottom chain



Speed adjustment

Fig. 1

Fig. 2



Neutral Adjustment

Fig. 3

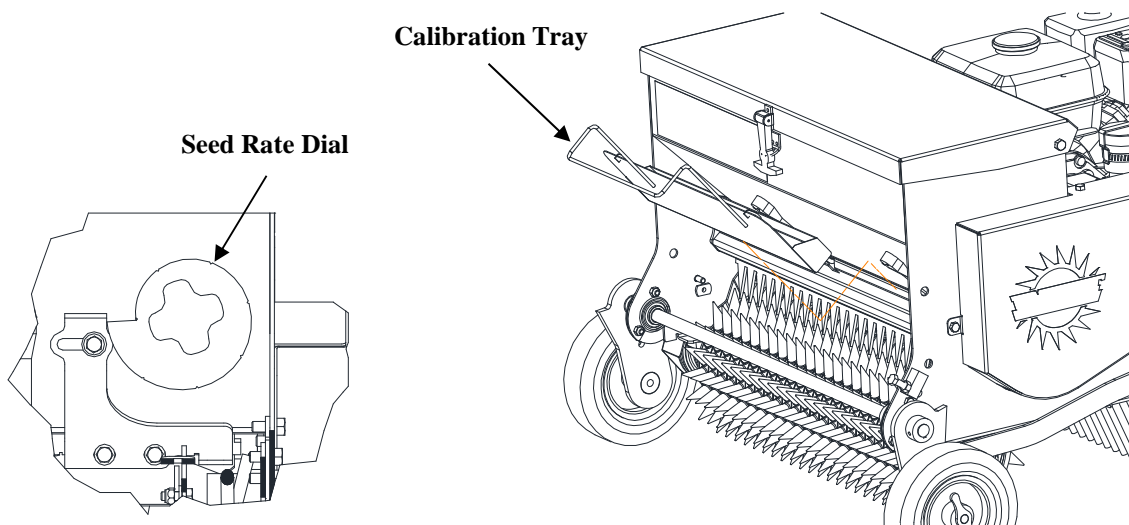
## Calibrating Seed Rate

It is easy to calibrate the seed rate and can be done in a reasonably short amount of time. All you need a measuring tape, weigh scale and container. Then follow the steps below.

1. Measure a distance of **166 ft**
2. Pour several pounds of seed into seed box
3. Insert calibration tray on mounting hooks below seed outlet at the bottom of the seeder .
4. Set Seed Rate Indicator to the approximate seed rate according to chart on next page.
5. Open seed slider and start AeroSeeder travelling at the same speed as you will be when you are seeding (approx 3 MPH/5km). Close seed slide when you pass the end mark then turn around and come back to the starting point. (If the tray is filled before getting to the end mark, stop and empty calibration tray into a container then continue. Depending on the seed rate you might have to empty the tray a number of times.)
6. Weigh the collected seed and multiply the total by 2. The total is the pounds per thousand square ft.

Example: if 2.5 pounds collected in tray

$$2 \times 2.5 = 5$$





# Calibration Chart



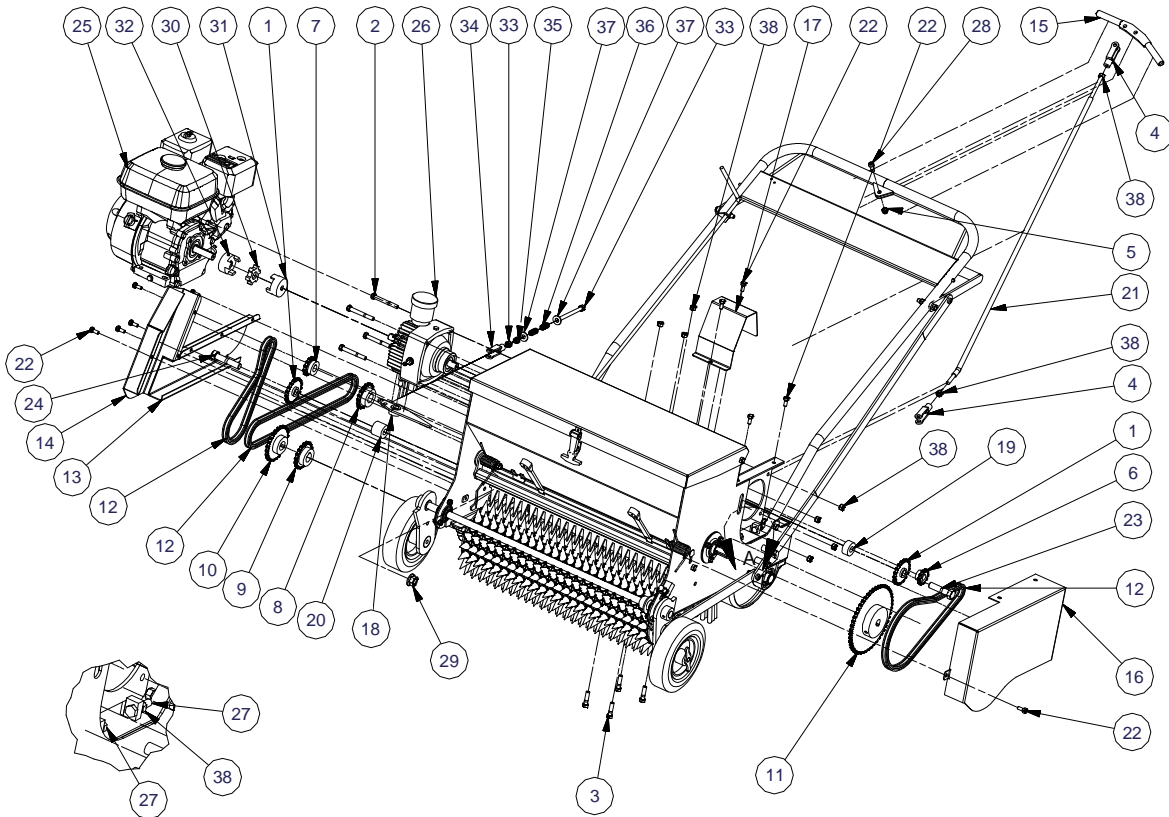
AOS24SP	Pounds per thousand square feet										
Grass Seeds	1	2	2-1/2	3	3-1/2	4	5	5-1/2	6	6-1/2	7
Annual Rye Grass	0	0	0	0.8	1.4	1.8	3.8	7.8	12.4	18	
Creeping Bent Grass	0	0.2	0.6	0.8	1.4	1.8	6.2	12.5			
Creeping Red Fescue	0	0	0	0	0	0.6	1.4	2.6	3.8	6.8	7.6
Hard Fescue	0	0	0	0.4	0.8	1	2.2	4	8.3		
Kentucky Blue Grass	0	0	0	0.6	1.5	1.8	5	10	17.2	24	
Orchard Grass	0	0	0	0	0	0.6	1	1.8	1.8	3	3.6
Perennial Rye Grass	0	0	0	0.6	1.2	1.8	4.2	7	13.2	21.6	
Alfalfa	0	0	0.6	2.4	6	13.6					
Red Clover	0	0	0.8	2	8	18.4					
White Clover	0	0.8	2.6	6	14.4	28.4					

## Note:

To determine seed rates for seeds not listed in the charts, compare weight and size to those listed and use a similar setting . Follow steps 1 to 5 on previous page to calibrate seed rate.

Calibrating is important because seed rates can change due to seed size, weight, treatment, moisture content, seed mixtures, humidity and seeder setup.

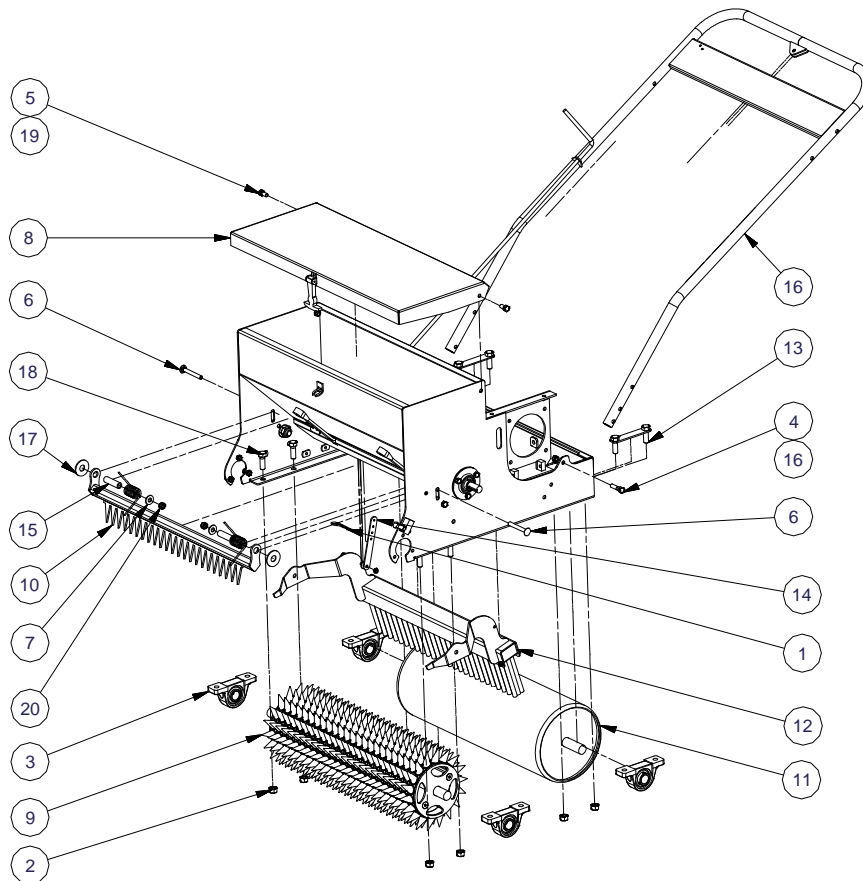
# Parts Drive assembly



DETAIL A

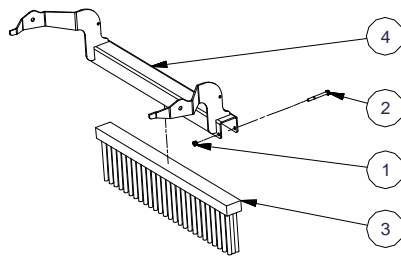
Parts List				Parts List			
ITEM	QTY	PART NUMBER	DESCRIPTION	ITEM	QTY	PART NUMBER	DESCRIPTION
1	2	20401708	Idler Sprocket	20	1	5116	Idler Bushing Right
2	6	38*3	Bolt	21	1	5117	Drive Control Rod
3	7	38112	Bolt	22	25	51634	Bolt
4	2	38CL	Clevis	23	1	58212	Bolt
5	8	38CLN	Lock Nut	24	1	583	Bolt
6	1	40B10X17MM	Sprocket	25	1	6X160UTQH6	5.5 Honda
7	1	40B12X3/4	Sprocket	26	1	700-004	Hydraulic Unit
8	1	40B17X1	Sprocket	27	2	FT-10	Fully Threaded Bolt
9	1	40B18X1	Sprocket	28	4	HX-311SB	Shoulder Bolt
10	1	40B24X1	Sprocket	29	1	58FSLN	Flange Nut
11	1	40B48X3/4	Sprocket	30	1	L0951	Lovejoy-L-spider
12	3	40RC	Roller Chain	31	1	L095X17MM	Lovejoy-coupling
13	1	5109	Shield	32	1	L095X3/4	Lovejoy-Coupling Motor
14	1	5110	Shield	33	2	12N	Nut
15	1	5111	Finger Lever	34	1	38CL	Clevis
16	1	5112	Shield	35	1	38CLN	Lock Nut
17	1	5113	Coupler Shield	36	2	72638S	Compression Spring
18	1	5114	Transmission Lever	37	2	38FW	Washer
19	1	5115	Idler Bushing Left	38	17	38N	Nut

# Parts Basic parts

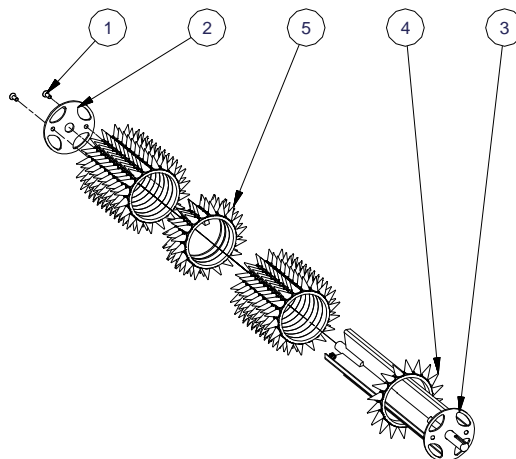


Parts List			
ITEM	QTY	PART NUMBER	DESCRIPTION
1	1	109-00060-0062	COTTERS, HAIRPIN
2	8	12FSLN	Nut
3	4	UCP205100	Bearing
4	7	38112	Bolt
5	2	3834	Bolt
6	2	383C	Carriage Bolt
7	6	38W	Washer
8	1	500324	Lid
9	1	501424	Spike Drive Roll
10	1	501524	Front Peg Scraper
11	1	501624	Smooth Roll
12	1	502624	Brush Assembly
13	2	5130	Brg Bolt Plate
14	1	5131	Broom Depth gauge
15	2	5132	Peg Scraper Swing Bushing
16	1	5133	Handle Weldment Round
17	3	58W	Washer
18	1		Hopper Weldment
19	8	38CLN	Lock Nut
20	17	38N	Nut

# Parts Drive roll & Broom

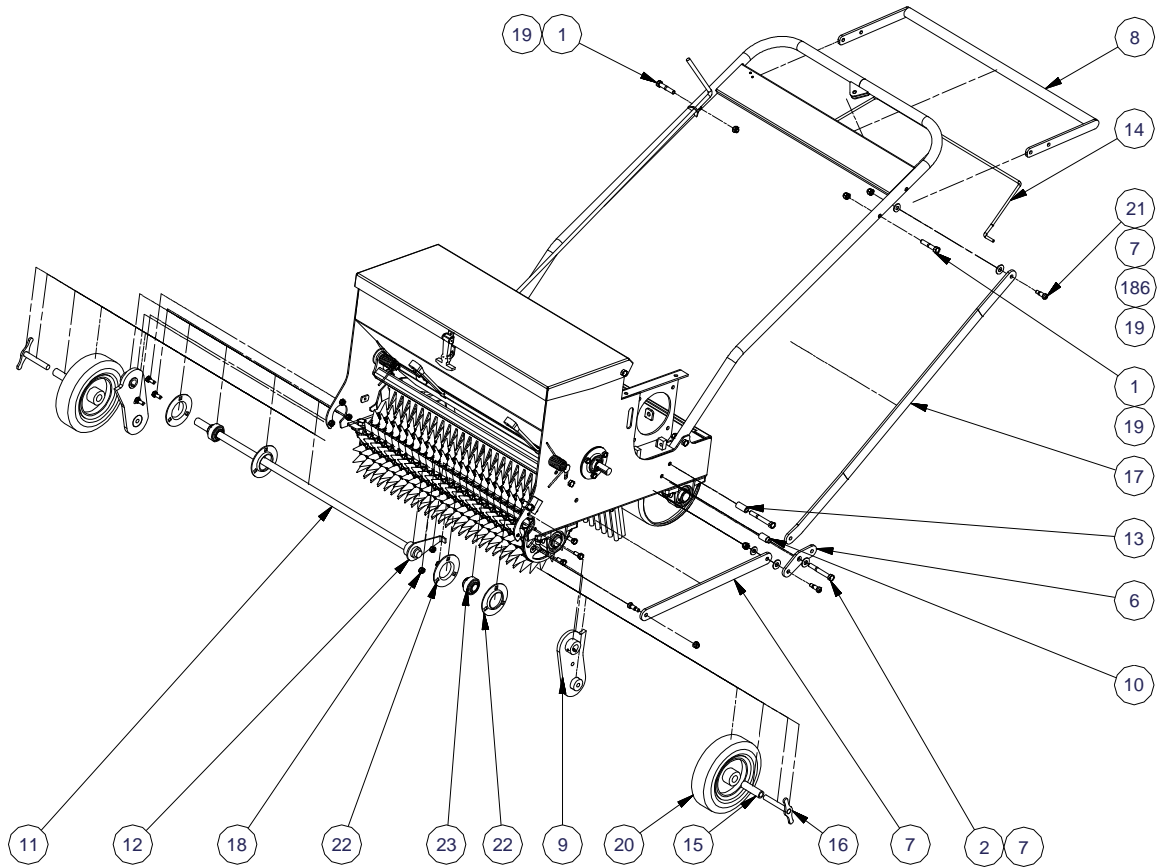


Parts List			
ITEM	QTY	PART NUMBER	DESCRIPTION
1	1	14 FSLN	Hex Nut
2	1	14212	Bolt
3	1	2010	Main Frame Brush
4	1	503924	Aera Seeder Broom Mount



Parts List			
ITEM	QTY	PART NUMBER	DESCRIPTION
1	2	381FH	Flat Head Bolt
2	1	5049	Spike Washer
3	1	505124	Drive Roll Light
4	20	5066	Over Seeder Spike machined slanted
5	4	5067	Over Seeder Drive Spike Slanted

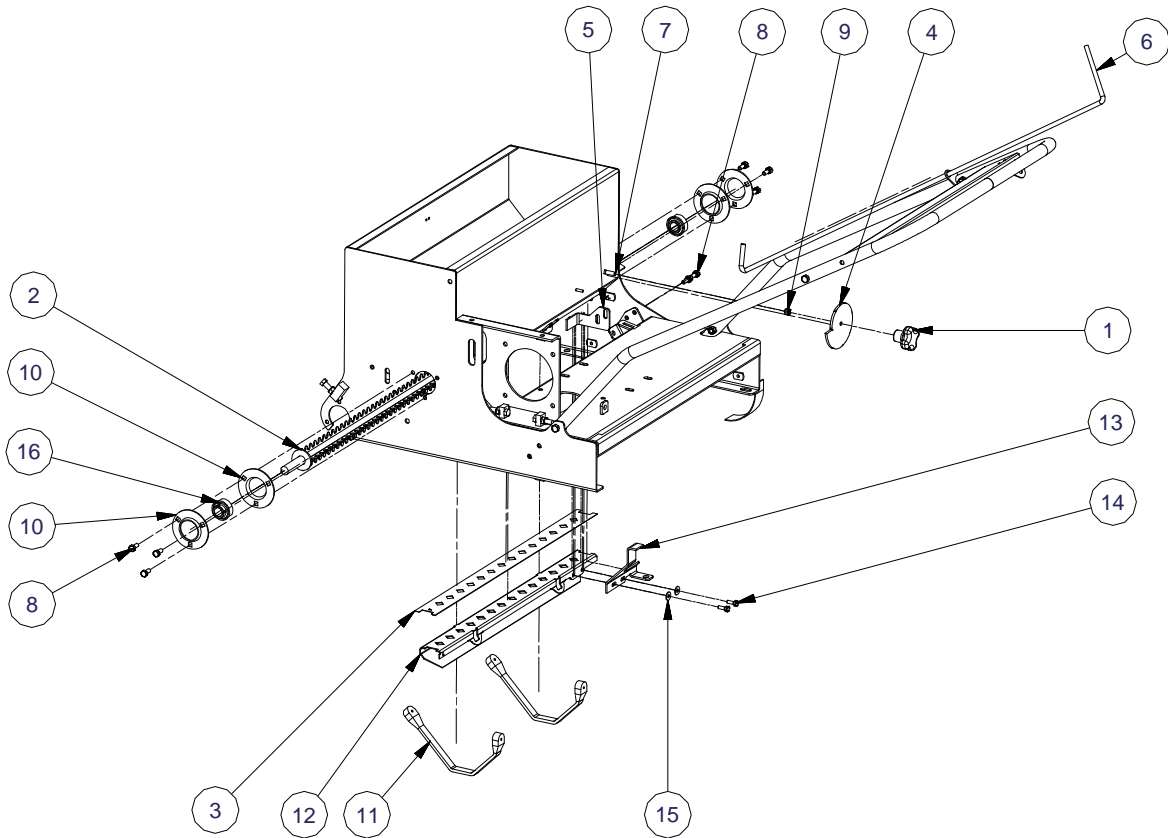
# Parts Wheel linkage



Parts List

ITEM	QTY	PART NUMBER	DESCRIPTION
1	3	38*2	Bolt
2	6	38*3	Bolt
19	8	38CLN	Lock Nut
6	1	5118	Lift Linkage Lever
7	1	5119	Lift Linkage B
8	1	5120	Lift Handle
9	2	5121	Wheel Mount
10	1	5122	Lift Bushing
11	1	5123	Wheel Lift Shaft
12	1	5124	Broom Lifter
13	2	5125	Stop Bushing
14	1	5126	Kill Lever
15	2	5127	Wheel Spacer
16	2	5128	Wheel Bolt
17	1	5129	Lift Linkage
18	10	516FSLN	Nut
20	2	8SPNBB-3/4	Wheel
7	6	38FW	Washer
21	4	HX-311SB	Shoulder Bolt
22	8	MS47	Bearing Flange
23	4	UC204012	Bearing
186	2	516FW	Washer

# Parts Agitator & Seed Control



Parts List			
ITEM	QTY	PART NUMBER	DESCRIPTION
1	1	134-022	Knob
2	1	500924	Agitator Shaft
3	1	508524	Seed Insert
4	1	5099	Seed Rate Dial
5	1	Slide Lever Mount Support Bracket	Slide Lever Mount Bracket
6	1	5136	Seed Slide Lever
7	1	516114	Bolt
8	25	51634	Bolt
9	10	516N	Nut
10	8	MS47	Bearing Flange
11	2	SH-9	Tarp Strap
12	1	508624	SS Seed Slide
13	1	5134	Slider Stop
14	2	1434	Hex Bolt
15	2	14FW	Washer
16	4	UC204012	Bearing

# WARRANTY



All new Reist machinery is warranted to be free from defects in material or workmanship, which may cause failure under normal usage and service when used for the purpose, intended, for a period of 12 months. This warranty applies only to a new Reist product, there being no warranty of any nature in respect to new products that have been modified or altered, repaired, neglected, or used in any way, which, in the opinion of Reist adversely affects its performance.

In the event of failure of a part or parts, and upon inspection, Reist is satisfied that failure is due to defective material or workmanship within 12 calendar months, from the date of delivery to an end user, such defective part or parts will be repaired or replaced by Reist at his business location. It is the responsibility of the buyer, at his expense, to transport the machine or equipment to the manufacturer service shop or, to an authorized service depot or, alternatively, to reimburse Reist for any travel or transportation expense involved in fulfilling this warranty.

When requested by Reist, part or parts shall be returned for inspection, transportation prepaid, to a place designated by Reist. **IN NO EVENT SHALL THE BUYER BE ENTITLED TO RECOVER FOR INCIDENTAL OR CONSEQUENTIAL DAMAGES, INCLUDING, BUT NOT LIMITED TO, LOSS OF PRODUCT, INCONVENIENCE, RENTAL OR REPLACEMENT EQUIPMENT, LOSS OF PROFIT, OR OTHER COMMERCIAL LOSS.**

This warranty becomes void and null if the equipment is modified, breaks down as the result of an accident, is not operated according to manufacturers recommendations, damaged by negligence or if maintenance has not been carried out as specified.

THIS WARRANTY IS NOT TRANSFERABLE

### Proof of Purchase

Date of purchase (yyyy mm dd)		Model	Serial #	
Dealer purchased from		City	State or Province	Country
First Name	Last Name		Phone # (include area code)	
Address			State or Province	Country
City	Postal Code	Reist Industries Inc. 100 Union St. Elmira Ontario N3B 2Z2		519-669-1501

### Proof of Purchase

Date of purchase (yyyy mm dd)		Model	Serial #	
Dealer purchased from		City	State or Province	Country
First Name	Last Name		Phone # (include area code)	
Address			State or Province	Country
City	Postal Code	Reist Industries Inc. 100 Union St. Elmira Ontario N3B 2Z2		519-669-1501

**Reist Industries (Elmira) Ont.  
100 Union St., Elmira  
Ontario, Canada, N3B 2Z2  
[www.reistindustries.com](http://www.reistindustries.com)**